



祥利企業有限公司
CheungLee Corporation

Babac, Brgy. Poblacion, Malalag, Davao del Sur, Philippines

Telefax #: (082) 233-2989; Cellphone #: 63-9177163333; 63-9177211149

Email: cheunglee_clc@yahoo.com ; lam.david23@yahoo.com

EPRMP SUMMARY FOR THE PUBLIC

(ESP)

September 10, 2020

Prepared by:

ENGR. JOHN CARLO O. ASIS

Pollution Control Officer

A) PROJECT DESCRIPTION

Project Information

Name of Project - HAZARDOUS WASTE RECYCLING FACILITY PROJECT

Location – Babac, Brgy. Poblacion, Malalag, Davao del Sur, Philippines

Nature of Project – Waste Recycling

Proponent Profile

Proponent Name – CHEUNGLEE CORPORATION

Address - Babac, Brgy. Poblacion, Malalag, Davao del Sur, Philippines

Project Information

The Cheunglee Corporations established was issued with an Environmental Compliance Certificate (ECC-R11-1510-0144) on October 22, 2015. On, January 20, 2016, the ECC has been amended correcting its location address from Brgy. Bulacan, Malalag, Davao del Sur to Brgy. Babac, Malalag, Davao del Sur.

From the previous project description, the facility consists of the following equipment, to wit;

1. Three (3) units Pelletizing Machine, each consisting of Primary Extruder (individually provided with a fume hood and two (2) cylindrical water impingement tanks) and Secondary Extruder (individually provided with a fume hood and rectangular water impingement tank) provided with ducting system leading to a common three (3)-layered bed carbon deodorizer and a smokestack;
2. Three (3) units Crusher Machine;
3. Two (2) units Presser;
4. One (1) unit Tie Box Machine; and
5. Two (2) units Sando Bag Machine.

Table 1: Existing Components based on ECC No.....

No.	Description	Quantity
1	Pelletizing Machine	3 units
2	Crusher Machine	3 units
3	Presser Machine	2 units
4	Tie Box Machine	1 unit
5	Sando Bag Machine	2 units
	Total	11 units

Table 2: New/Additional Installation

No.	Description	Quantity
1	Pelletizing Machine	1 unit
2	Crusher Machine	2 units
3	Washing Machine	1 unit
4	Presser Machine	4 units
5	Corner Post Machine	2 units
6	Plastic Hose Machine	1 unit
	Total:	11 units

Table 3: Proposed Overall Project Components

No.	Description	Quantity
1	Pelletizing Machine	4 unit
2	Crusher Machine	5 units
3	Washing Machine	4 unit
4	Presser Machine	6 units
5	Corner Post Machine	2 units
6	Plastic Hose Machine	1 unit
	Total:	22 units

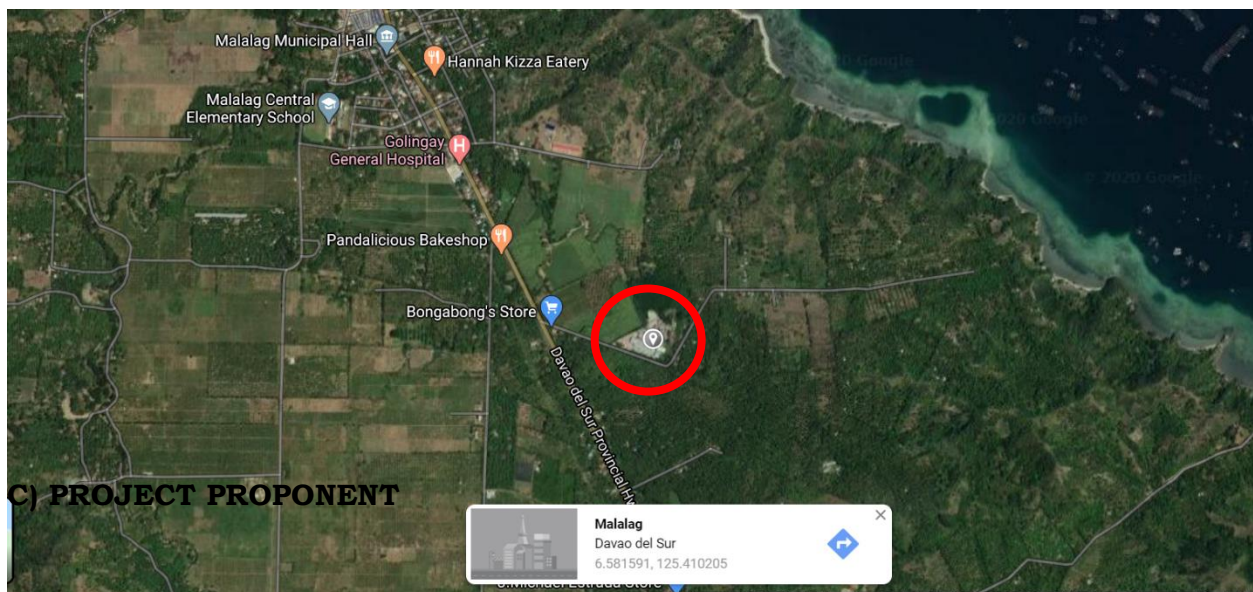
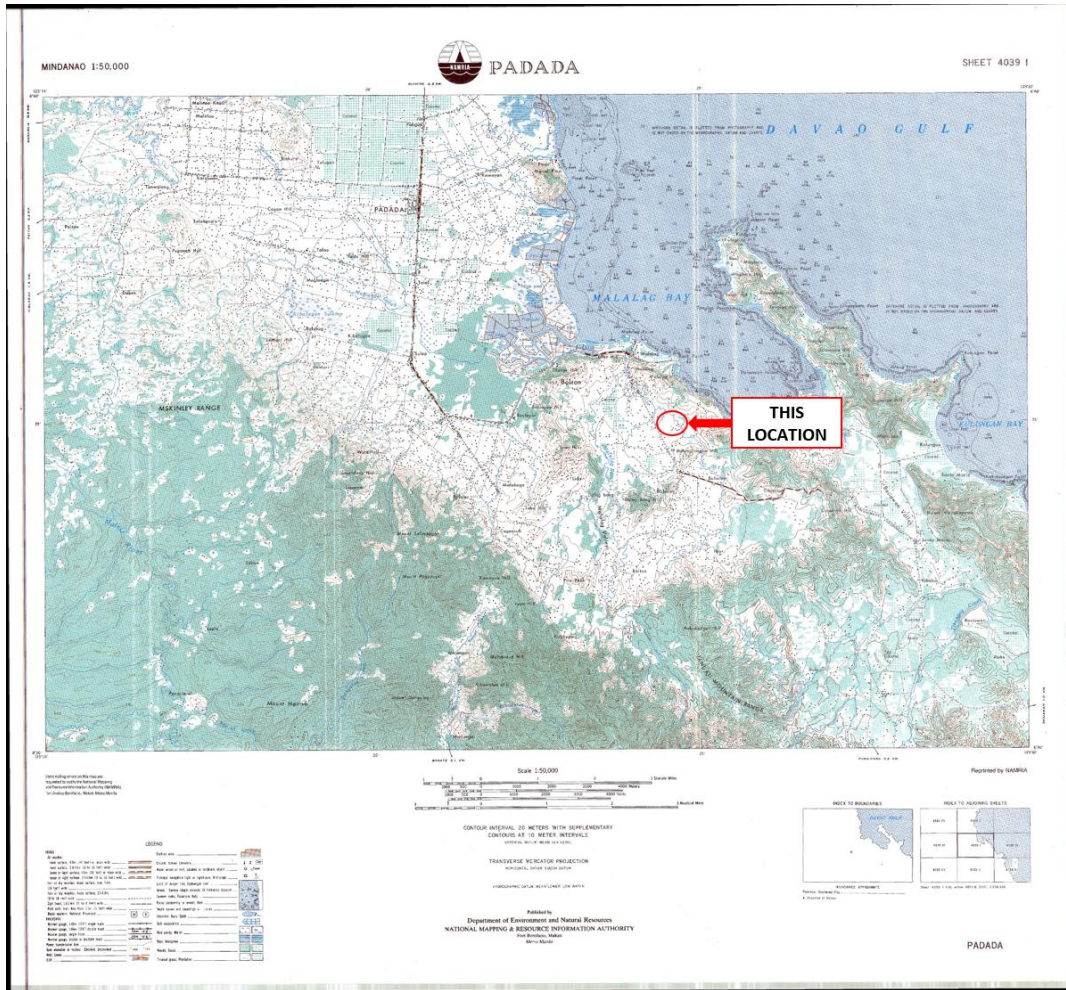
To sum up, the facility will hold 22 units of machinery for both existing and additional installations. Materials used in the process are Polybags Impregnated and Non-Impregnated Plastics.

Resource Utilization

Water Source: Malalag Water District and Deep Well Drilling

Energy Source: Davao Del Sur Electric Cooperative (DASURECO)

B) PROJECT LOCATION



C) PROJECT PROPONENT

Proponent Name – CHEUNGLEE CORPORATION

Address - Babac, Brgy. Poblacion, Malalag, Davao del Sur, Philippines

Managing Head – Mr. David Lam

Pollution Control Officer – Engr. John Carlo O. Asis

D) PROJECTED TIMEFRAME OF THE PROJECT IMPLEMENTATION

ACTIVITY	MONTHS								
	January	February	March	April	May	June	July	August	September
Project Plant's Assessment and actual operation validation									
Public Scoping / Public Participation									
Generation of reports / writing									
Report Submission/ completion									
Review of submitted report									
ECC issuance									

Project Implementation after ECC amendment issuance

E) CONCISE INTEGRATED SUMMARY OF THE MAJOR IMPACTS AND RESIDUAL EFFECTS AFTER MITIGATION

Project Phase / Environmental Aspect	Environmental Component Likely to be Affected	Potential Impact	Prevention / Mitigation / Enhancement Measures	Residual Effects after mitigation
LAND	Solid waste	Mixed and dumped unsorted waste	Strict implementation of in-house proper waste segregation	Solid waste materials that are non-compostable and non-recyclable. It should be disposed ecologically through a sanitary landfill. Examples are: -Sanitary napkins -Disposable diapers -Worn-out rugs
	Hazardous Waste	Soil and water pollution or contamination	Proper transport and treatment in compliance to DENR-EMB protocols for TSD and Transporter regulation	Polybag particles might spread throughout the plant vicinity.
WATER	Wastewater	Seepage and/or intrusion to the nearest receiving waterbody	Ensure liners and silt traps in drainage system provided	Small amount of water leakages will go into nearest waterbody or land.

AIR / NOISE	Air quality	Increase particulate concentration in the ambient air	Regular spraying of water to the exposed soil/ ground, Provision of perimeter fence and trees as buffer. Regular inspection on APCD and regularly replace the carbon deodorizer.	Uncontrolled small amount of smoke will leak inside the plant especially during immediate maintenance.
	Noise level	Increase noise levels from operating machinery	Maintenance of and tune-up to the equipment shall be strictly observed. Noise generating equipment shall be provided with ear mufflers for workers. Buffer or perimeter fence.	
PEOPLE	Health / Safety Hazards/ Social Services	Exposure of workers to health hazards due to unexpected incidents	Trained personnel shall be hired to assist and give first aid to workers particularly at times of untoward incidents/accidents. First aid kit shall always be available in the project site Workers shall be provided with PPE like masks and gloves.	Inevitable accident may still occur
	COVID19 Prevention and Control	Spread of the virus to workers	Implement the following health guidelines: <ul style="list-style-type: none"> - Wearing of masks all the time - Physical distancing - Installation of hand sanitizers on 	

			designated areas - 50% worker capacities on offices and close spaces - Oblige all who enters the Plant for a thermal scanning - Secure logging of necessary details for contact tracing	
LAND	Aesthetic	Devaluation of land	Restoration shall be effected and zero to no materials shall be left	Original layout might not be attained
AIR	Dust Emission	Movement of vehicles during humid days	Regular sprinkling of water	
PEOPLE	Safety / Livelihood	Potential hazard from dismantling procedures Lost of income	PPE's shall be provided to workers -Warning signs shall be posted at strategic places to remind /inform the workers/ visitors of construction hazards; Referral for workers to other partner companies	Inevitable accident may still occur

F) IDENTIFIED STAKEHOLDERS

- LGU of Malalag Davao del Sur
- Government Agencies (CENRO, MENRO, etc...)
- Barangay Officials on nearby barangays (Brgy. Poblacion and Brgy. Bulacan)
- NGOs/POs
- Household, Business activities and Industries
- Indigenous People
- Local Institutions (Schools, Churches, Hospitals)

G) PROJECT PROPONENTS STATEMENT OF COMMITMENT AND CAPABILITY TO IMPLEMENT NECESSARY MEASURES TO PREVENT ADVERSE NEGATIVE IMPACTS

In so far as the Environmental Compliance Certificate (ECC) is concerned, Cheunglee Corporation has been issued with an ECC with Reference No. ECC-R11-1510-0144 dated 22 October 2015 and has been ensuring that conditions stated in its ECC have fully complied. Our company ensures the implementation of Social Development Program as stated in our ECC. We already have various projects for the welfare of our stakeholders and particularly we have created many job opportunities to them. We are committed to continue our support especially in this trying times brought to us by COVID19.

H) INFORMATION ON WHERE TO GET A COPY OF THE EPRMP FOR FURTHER INFORMATION

All stakeholders will be allowed to have a copy of the Environmental Performance Report and Management Plan (EPRMP), copies will be available in the plant or can communicate directly to the Pollution Control Officer Engr. John Carlo O. Asis (0910-6769636).